

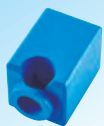


Quadrilla

Marble Run Construction

E6020
Cliffhanger





2x



1x



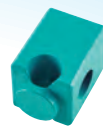
2x



1x



1x



3x



2x



2x



8x



4x



2x



6x



1x



2x



1x



50x



1x



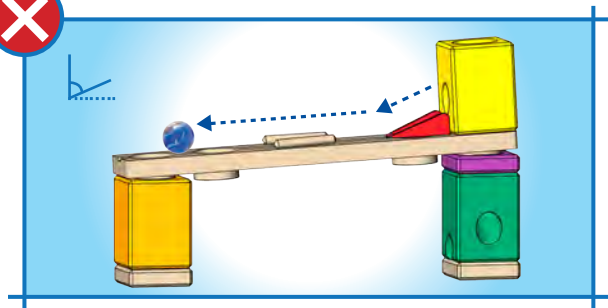
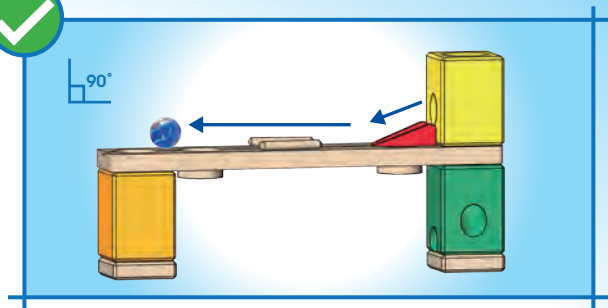
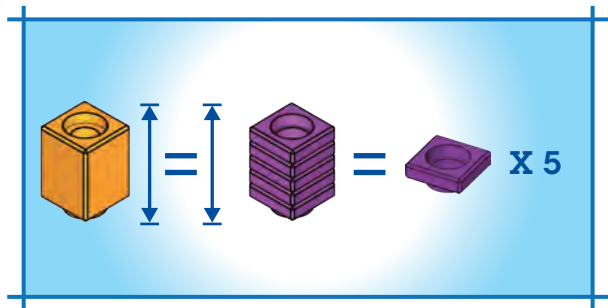
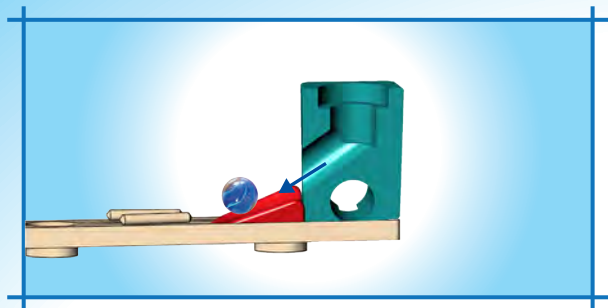
3x

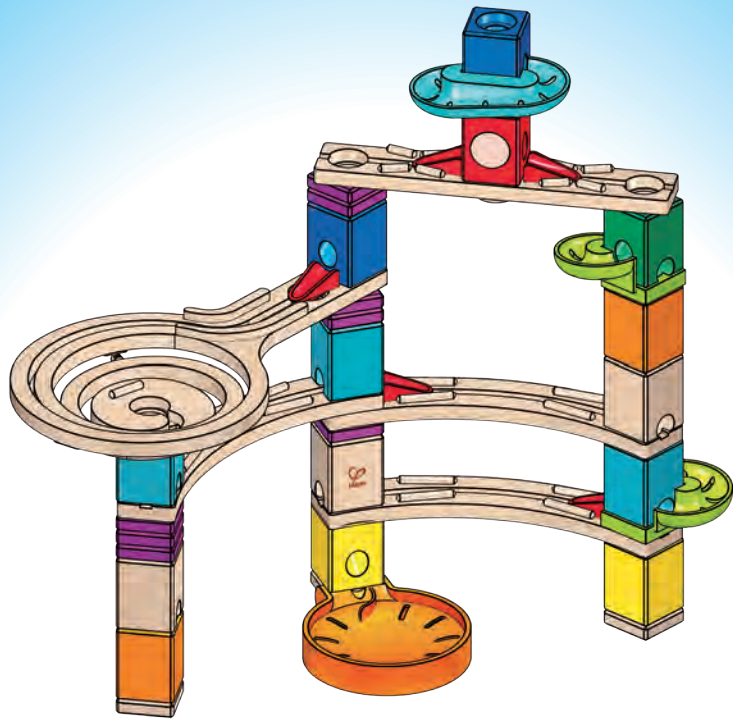


1x



1x





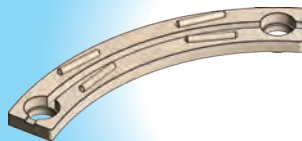
2



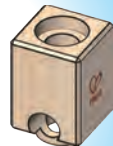
2x



3



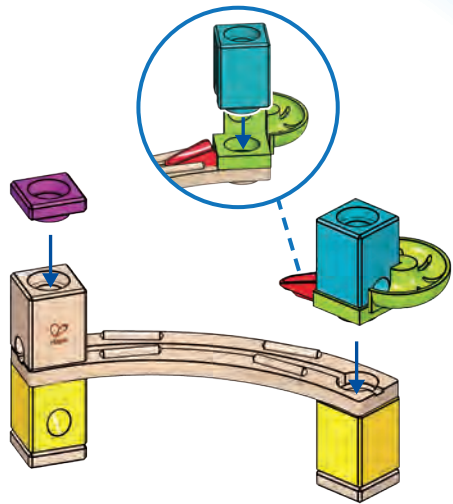
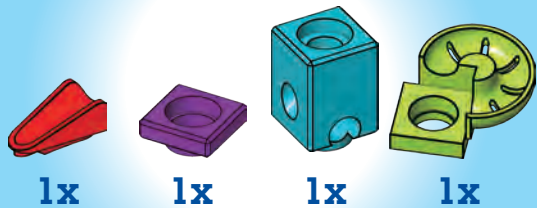
1x



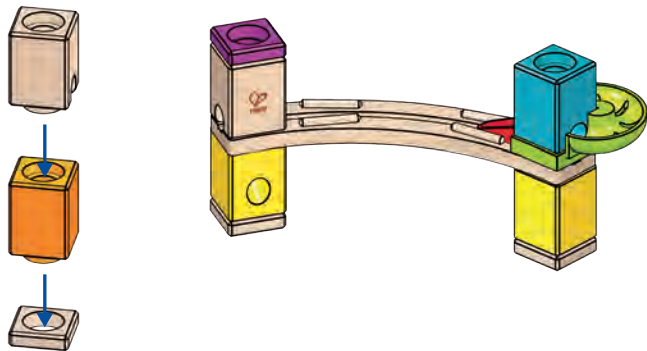
1x



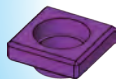
4



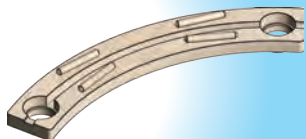
5



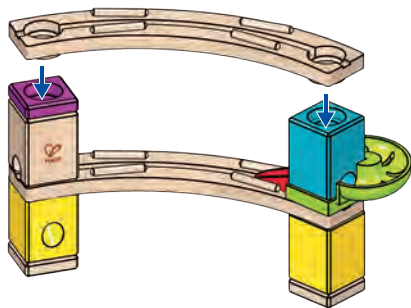
6



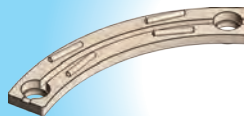
3x



1x



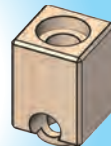
7



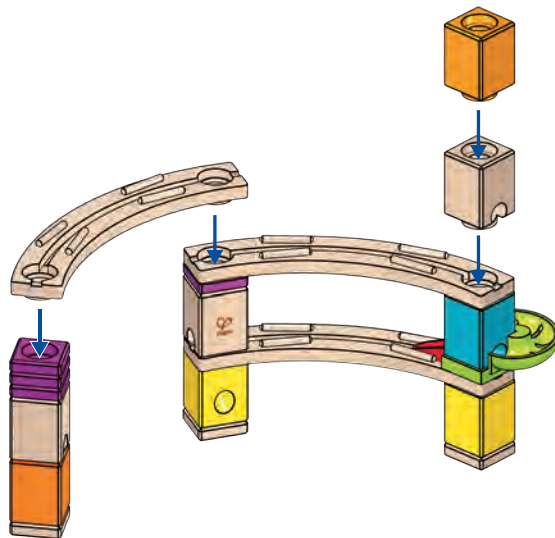
1x



1x



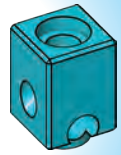
1x



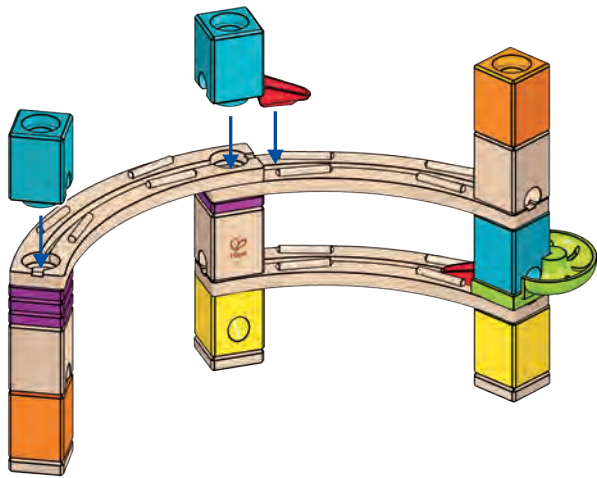
8



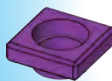
1x



2x



9



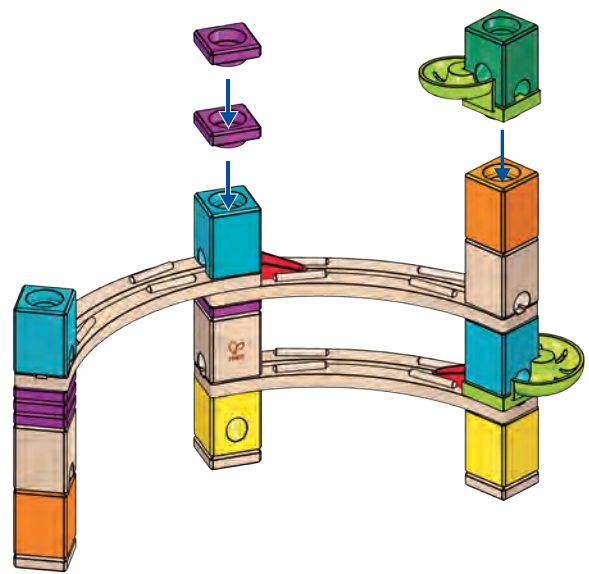
2x



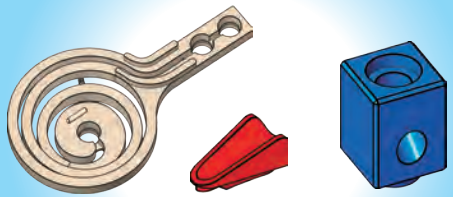
1x



1x



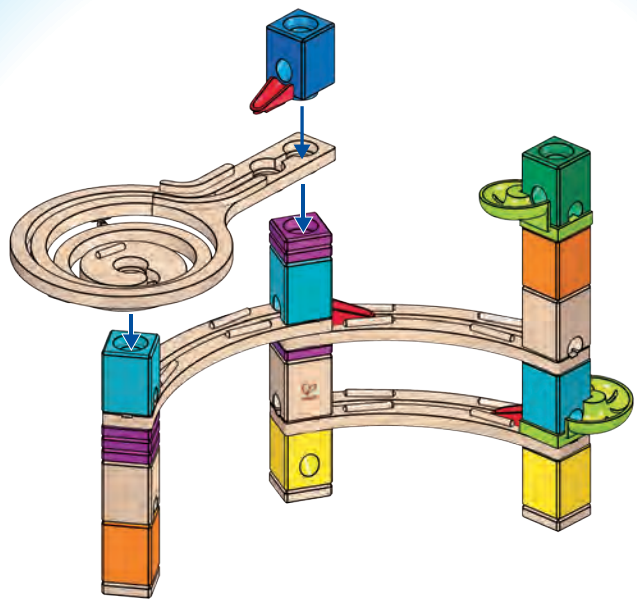
10



1x

1x

1x

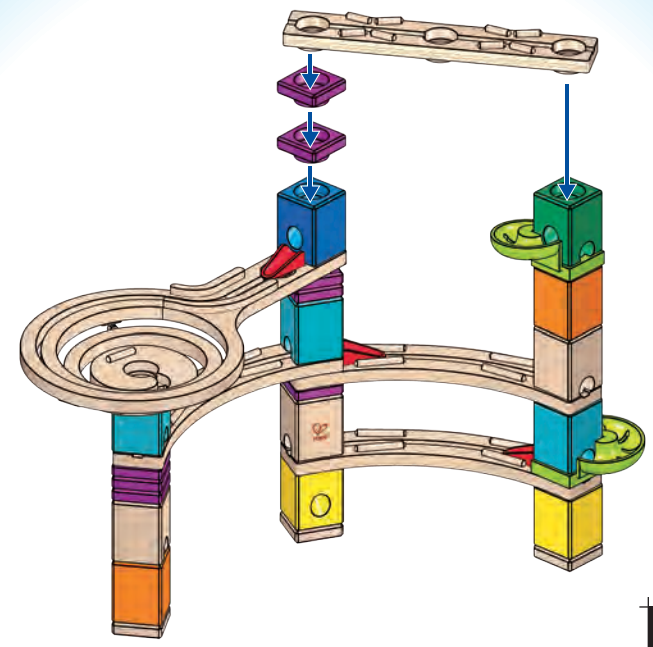


11



2x

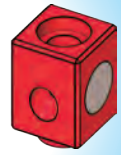
1x



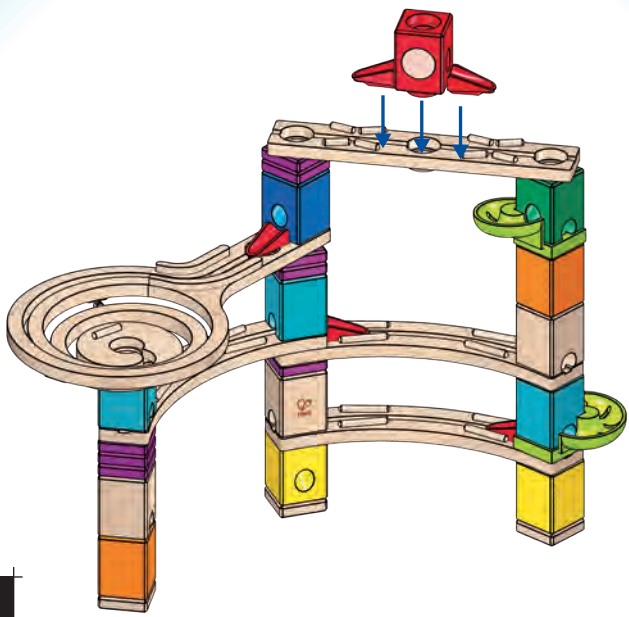
12



2x



1x



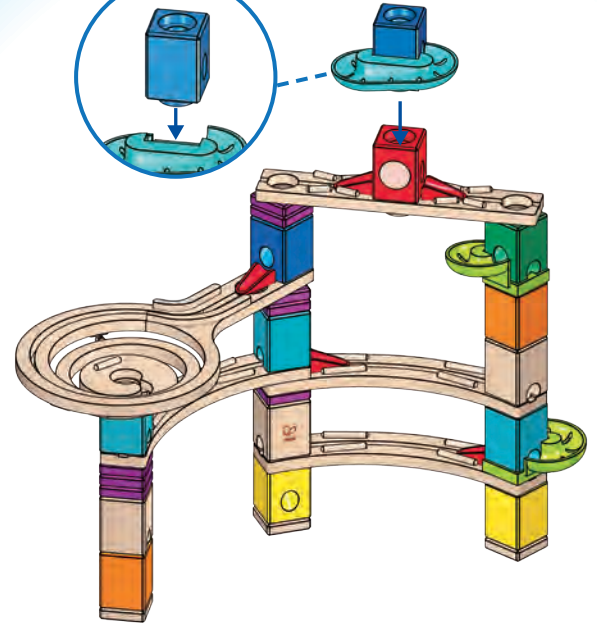
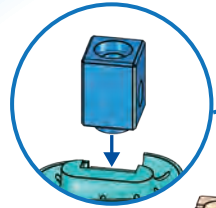
13



1x



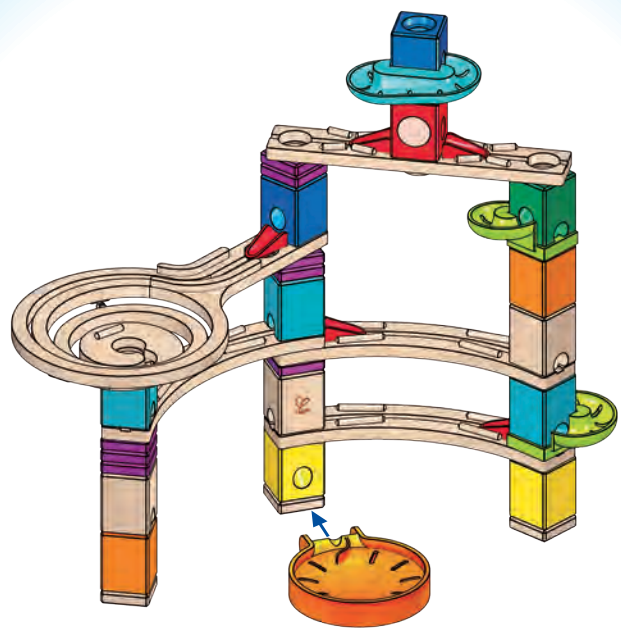
1x



14



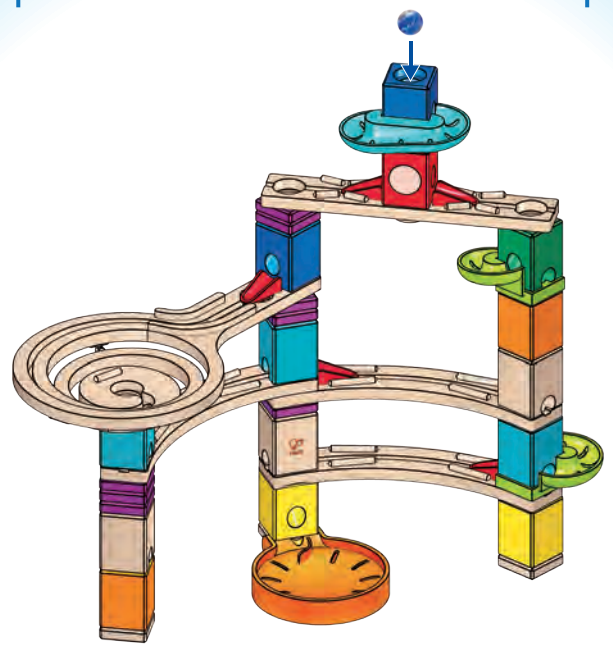
1x



15



1x





Hape International AG
Alsfelder Straße 41
35325 Mücke
Germany

Hape
1909 Tyler St. #301
Hollywood FL 33020
USA